



UPC-EAFB-419

ELECTRICAL ACTUATOR FLANGE END THREE PIECE BALL VALVE

Design Feature:

- Three Pc Body Construction
- Investment Cast Components
- Full Port
- Blow Out Proff Stem
- Actuator Mounting Pad ISO-5211
- Flange Ends

Conformity to Standards & Codes :

Design & Face to Face Dimensions :

BS 5351 / ISO 17292 / ASME B 16.10

Valve Testing : API 598

Flange Ends Confermity:

ASME B16.5 CL 150#

Actuator Standard Features

- Compact, Light Weight and Robust Design.
- IP68 protection.
- Quarter turn (90°) operation with mechanical travel stops.
- Torque range: 20 NM to 6000 NM.
- Type 4X weatherproof aluminium alloy enclosure.
- Highly visual dome style valve position indicator.
- Space heater in built in all models.
- ISO5211 multi flange valve mounting
- Thermostatically controlled space heater – included as standard in all models.
- Two auxiliary limit switches included with on-off units – included as standard in all models (potentiometer feedback).
- Approvals - CSA & CE.
- High duty cycle.
- Ambient temperature -20° ~ +80° C.
- Smart modulation module, anti-interference, ratio board protection.
- Manual override with clutch type handwheel in all models.
- Power Supply 220V-AC/24VDC

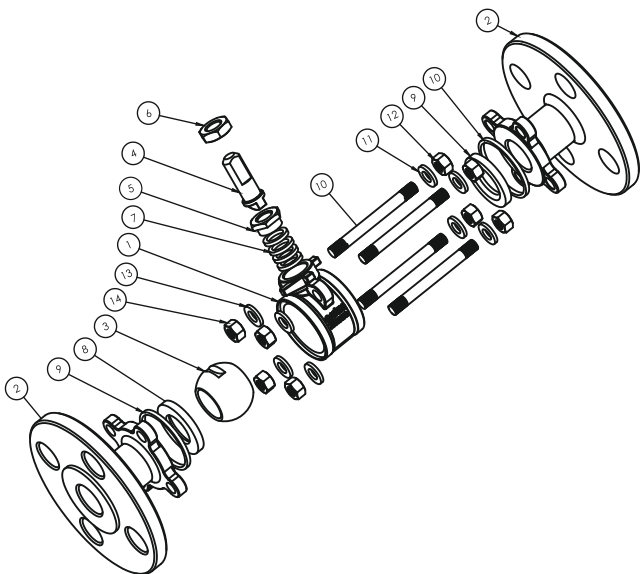


Size Range:

15mm (1/2") to 200mm (8")

UPC INSTRUMENTS PVT.LTD.
AN ISO 9001:2015, 14001-2015 CE & TÜV SÜD CERTIFIED COMPANY

ELECTRICAL ACTUATOR THREE PIECE FLANGE END BALL VALVE

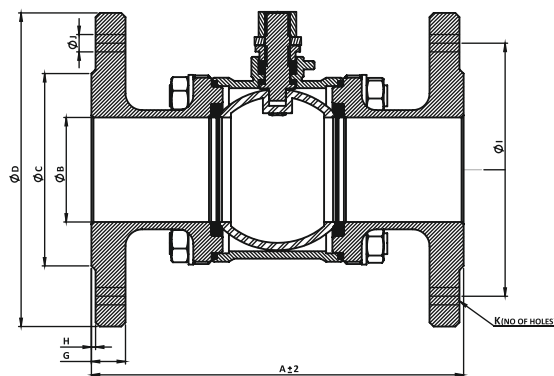


PART LIST

S.NO.	PART NAME	MATERIAL	SPECIFICATIONS	QTY.
1.	BODY	STAINLESS STEEL	ASTM A351 GR. CF8/CF8M/ ASTM A216 GR. WCB	1
2.	FLANGE	STAINLESS STEEL	ASTM A351 GR. CF8/CF8M/ ASTM A216 GR. WCB	2
3.	BALL	STAINLESS STEEL	ASTM A351 GR. CF8/CF8M/ ASTM A276 GR. 304/316	1
4.	STEM	STAINLESS STEEL	ASTM A276 GR. 304/316	1
5.	GLAND NUT	STAINLESS STEEL	AISI 304	1
6.	LOCK NUT	STAINLESS STEEL	AISI 304	1
7.	GLAND PACKING	PTFE	BS 6564	4
8.	SEAT RING	PTFE	BS 6564	2
9.	BODY SEAL	PTFE	BS 6564	2
10.	STUD	STAINLESS STEEL	AISI 304	4
11.	WASHER	STAINLESS STEEL	AISI 304	8
12.	NUT	STAINLESS STEEL	AISI 304	8

*Lockable handles are available on request.

*Stem seals, body seals and seat ring, other than PTFE are available on request.



DIMENSIONS

SIZE	A	B	C	D	G	H	I	J	K
15	108	14	35	90	10.0	2	60.3	16	4
20	117	19	43	100	10.9	2	69.9	16	4
25	127	24	51	110	11.6	2	79.4	16	4
32	140	31	63.5	115	13.2	2	88.9	16	4
40	165	38	73	125	14.7	2	98.4	16	4
50	178	50	92	150	16.3	2	120.7	19	4
65	190	63	105	180	17.9	2	139.7	19	4
80	203	76	127	190	19.5	2	152.4	19	4
100	229	100	157	230	24.3	2	190.5	19	8

*All dimensions are in mm unless and otherwise specified.

TEST PRESSURE:

Hydraulic Body Test	29.0 Kg/Cm ²
Hydraulic Seat Test	21.5 Kg/Cm ²
Pneumatic Seat Test (Optional)	4-7 Kg/Cm ²

WARRANTY

All valves are guaranteed against any manufacturing defects for a period of 12 months from date of supply, provided the valves have not been misused, damaged or installed for services they are not recommended. The company shall be liable to furnish part / parts thereof or full valve as the company may deem fit.

UPC INSTRUMENTS PVT.LTD.

AN ISO 9001:2015, 14001-2015 CE & TÜV SÜD CERTIFIED COMPANY

Office: Plot No. 18, Towel Market, Gohana Road, Panipat-132103 (HARYANA)

Manufacturing Unit: Plot no.125,Near Tehsil, Dinger Majra Road, Gharaunda, Karnal-132114 (HARYANA)

✉ : info@unitechmeter.com ✉ : ho@unitechmeter.com 🌐 : www.unitechmeter.com

Due to continuous development program, design and data in this leaflet are subject to change without prior notice.